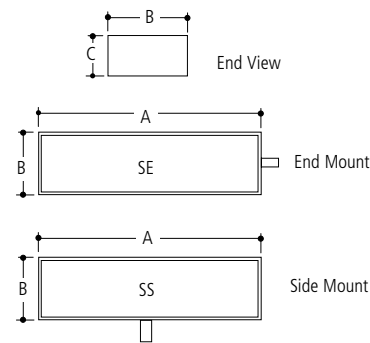


SPECIFICATIONS

Quality Lighting™

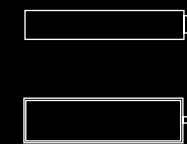
- HOUSING** Each Design SE and SS housing shall be formed from heavy gauge aluminum and internally welded. The fixtures shall be C-UL & UL listed "suitable for wet locations".
- LENS AND GASKETING** Extruded clear anodized aluminum door frame shall be furnished with fully tempered, thermal and shock resistant clear glass. White dacron open cell gasket prevents entry of moisture, dust and insects. All external hardware to be stainless steel.
- REFLECTOR SYSTEM** The optical assembly shall be of highly specular aluminum.
- BALLAST** Ballast shall be tray mounted and readily accessible, removable and insulated. The fixture is to be factory pre-wired, completely assembled and electronically tested prior to shipment. Quick disconnects are standard.
- FINISH** Polyester powder coat, electrostatically applied, which is preceded by a five step pre-treatment process including an iron phosphate priming stage for superior coating adhesion. This process meets or exceeds all ASTM testing requirements, including those for 1,000 - hour salt spray endurance testing.



DIMENSIONS				
	20"	24"	34"	48"
A	20.75" (527 mm)	24.625" (625.47 mm)	34.375" (873.12.8mm)	48.00" (1219.20 mm)
B	14.93" (379.22 mm)	14.93" (379.22 mm)	14.93" (379.22 mm)	14.93" (379.22 mm)
C	7.25" (184.15 mm)	7.25" (184.15 mm)	7.25" (184.15 mm)	7.25" (184.15 mm)

EFFECTIVE PROJECTED AREA (EPA)				
	20"	24"	34"	48"
	1.40 sq. ft. (.13M2)	1.50 sq. ft. (.144M2)	1.95 sq. ft. (.18M2)	2.62 sq. ft. (.25M2)

WEIGHT				
	20"	24"	34"	48"
	42 lbs. (19 kgs)	48 lbs. (21.8 kgs)	55 lbs. (25 kgs)	62 lbs. (28 kgs)



LOW PRESSURE SODIUM

Quality Lighting™

Quality Lighting is a Philips group brand

2930 South Fairview Street
 Santa Ana, CA 92704
 Phone (714) 371-2394 • FAX (714) 668-1107
 Toll Free Phone (800) 545-1326
 e-mail: sales@qualitylighting.com • www.qualitylighting.com
 Specifications subject to change without notice. ©2007 Quality Lighting

DESIGN-SE/SS



DISTRIBUTIONS

TYPE 3 Asymmetrical
 TYPE F Forward Throw

ORDERING EXAMPLE SE-24-3-LPS-90-BK-120

DESIGN	DISTRIBUTION	LPS	LAMP
SE-End Mount			
SE-20	3	18/35/55	T-17
SE-24	3	90	T-21
SE-24	3	2x55	2-T-21
SE-34	3	2x90	2-T-21
SE-34	3	135	T-21
SE-48	3	180	T-21

SS-Side Mount

SS-20	F	18/35/55	T-17
SS-24	F	90	T-21
SS-34	F	135	T-21
SS-48	F	180	T-21

Note: Glass Lens Standard

REQUIRED CHOICES

FINISH



VOLTAGES MOUNTINGS

120	SA	Standard Arm
208	LA	Long Arm
240	CWB	Cast Wall Bracket
277		
347		
480		

OPTIONAL CHOICES

ELECTRICAL OPTIONS	OPTICAL OPTIONS	LIGHT TRESPASS OPTION
FD Single Fusing 120V/277V	CP Clear Flat Polycarbonate Lens	HSS House Side Shield75° Standard
FDD Double Fusing 480V		
FDFD Double Fusing 208V/240V		
FDC Single Fusing 347V		
PCT Photo Cell and Receptacle		