

**Corridor**  
**Walkways**  
**Building Entrances**  
**Accent**



## Specifications



ISO 9001  
Certified



EISA COMPLIANT

- HOUSING** SJHCX housing and top shall be formed aluminum sheet metal housing. The sides and top shall be mechanically and chemically sealed to ensure a rain-tight seal. The fixture shall be UL listed "suitable for wet locations". Standard unit constructed to IP54.
- LAMP ACCESS** Door frame shall be mitered anodized aluminum extrusion, gasketed to ensure a positive seal to the housing.
- LENS** The lens shall be tempered glass, thermal and shock resistant. (Flat glass or sag glass determined by wattage and optics specified.)
- INSTALLATION** SJHCX standard mounting shall be ceiling mount.
- REFLECTOR** Rotatable multi-faceted segmented reflectors. Optical assemblies shall be field rotatable at 90° increments and exchangeable. Vertically lamped, flat glass optics (2F, 3F, 4F, 5F) provide Full Cutoff distribution and precision uniformity. Horizontally lamped, flat glass optics (2H, 3H, 4H, 5H) provide Full Cutoff distribution. Vertically lamped, sag glass optics (2V, 3V, 4V, 5V) provide Cutoff distribution.
- BALLAST** Ballast shall be high power factor with reliable starting at temperatures as low as -34°C (-30°F) for Pulse Start Metal Halide and -40°C (-40°F) for High Pressure Sodium.
- FINISH** Polyester powder coat, electrostatically applied, which is preceded by a five step pre-treatment process including an iron phosphate priming stage for superior coating adhesion. This process meets or exceeds all ASTM testing requirements, including those for 1,000 - hour salt spray endurance testing.
- WARRANTY** Mechanical, finish and electrical shall be covered by a limited 1-year warranty. See terms and conditions for details.



Some luminaires use fluorescent or high intensity discharge (HID) lamps that contain small amounts of mercury. Such lamps are labeled 'Contain Mercury' and/or with the symbol 'Hg'. Lamps that contain mercury must be disposed of in accordance with local requirements. Information regarding lamp recycle and disposal can be found at [www.lamprecycle.org](http://www.lamprecycle.org).

<b>PROJECT</b>
<b>FIXTURE TYPE</b>
<b>CATALOG#</b>

Quality Lighting  
 1611 Clovis R. Barker Rd.  
 San Marcos, Texas 78666  
 Toll Free Phone (800) 545-1326 • FAX (866) 713-6002  
 www.qualitylighting.com  
 e-mail: Quality.Info@Philips.com

**SJHCX**

**ORDERING EXAMPLE** SJHCX18P-175-2F-120-CM-F1-DB

**ORDERING INFORMATION**

SERIES / SOURCE / WATTAGE	DISTRIBUTION	VOLTAGE	MOUNTING	OPTIONS	FINISH
SJHCX18P-70 Pulse Start Metal Halide	2F Full Cutoff, Vertical Lamp, Flat Glass	120	CM	F1	DB
SJHCX18P-100	3F	208	Y	F2	BLK
SJHCX18P-150	4F	240		CSR	GR
SJHCX18P-175 (E)	5F	277			SA
SJHCX18P-200	2V Cutoff, Vertical Lamp, Sag Glass	347			WHT
SJHCX18P-250	3V	480			TBK
SJHCX18P-400	4V				TGN
	5V				RAL(*)
SJHCX18S-150 High Pressure Sodium	2H Full Cutoff, Horizontal Lamp, Flat Glass				
SJHCX18S-250	3H				
SJHCX18S-400	4H				
	5H				

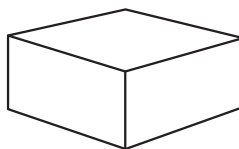
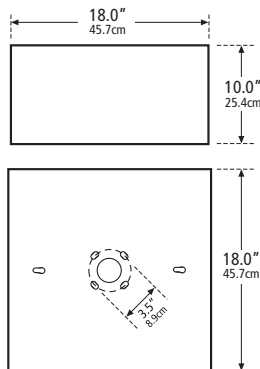
SERIES / SOURCE / WATTAGE	DISTRIBUTION	VOLTAGE	MOUNTING	OPTIONS	FINISH
<b>Pulse Start Metal Halide</b> <input type="checkbox"/> SJHCX18P-70 <input type="checkbox"/> SJHCX18P-100 <input type="checkbox"/> SJHCX18P-150 <input type="checkbox"/> SJHCX18P-175 (E) <input type="checkbox"/> SJHCX18P-200 <input type="checkbox"/> SJHCX18P-250 <input type="checkbox"/> SJHCX18P-400	Vertical Lamp, Flat Glass <input type="checkbox"/> 2F Type II <input type="checkbox"/> 3F Type III <input type="checkbox"/> 4F Type IV <input type="checkbox"/> 5F Type V  Vertical Lamp, Sag Glass <input type="checkbox"/> 2V Type II <input type="checkbox"/> 3V Type III <input type="checkbox"/> 4V Type IV <input type="checkbox"/> 5V Type V	<input type="checkbox"/> 120  <input type="checkbox"/> 208  <input type="checkbox"/> 240  <input type="checkbox"/> 277  <input type="checkbox"/> 347  <input type="checkbox"/> 480	<input type="checkbox"/> CM Ceiling Mount  <input type="checkbox"/> Y Yoke Mount	<input type="checkbox"/> F1 Single Fusing, 120V/277V/347V <input type="checkbox"/> F2 Double Fusing, 208V/240V/480V <input type="checkbox"/> CSR Quartz Restrike Note: SJHCX Type IV optics include HSS.	<input type="checkbox"/> DB Dark Bronze  <input type="checkbox"/> BLK Black  <input type="checkbox"/> GR Gray  <input type="checkbox"/> SA Satin Aluminum  <input type="checkbox"/> WHT White  <input type="checkbox"/> TBK Textured Black  <input type="checkbox"/> TGN Textured Green  <input type="checkbox"/> RAL(*) Specify Custom RAL color number



Source	Wattage	Lamp Envelope
PS	150W-400W	BT / ED28
HPS	150W 250W-400W	ED23 1/2 ED18

**DIMENSIONS**

CM Ceiling Mount (Standard)



WEIGHT 30 Lbs