

SPECIFICATIONS

HOUSING Each Design 410 shall be constructed of formed and welded Type 304-2B stainless steel. For marine and highly corrosive environments Type 316 stainless steel is available. In order to assure proper positioning of the luminaire in coffered ceilings, the housing shall be available in depths to 10.5" to 20". All internal and external threaded hardware shall be stainless steel. The fixture shall be C-UL & UL listed "suitable for damp locations." Optional wet location (WL) UL listing available upon request.

LENS AND LENS FRAME The extruded clear hard coat anodized aluminum lens frame shall be stainless steel pin hinged to the housing. The thermal and shock resistant glass lens shall be gasketed to the lens frame with extruded "U" channel neoprene gasketing. The lens frame shall be gasketed to the housing's internal reinforcement ledge with silicone impregnated Dacron gasketing..

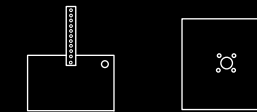
MOUNTING The housing sides and top shall be provided with knock-outs for thru-wiring, direct ceiling mount and junction box mount. An optional trunnion mount bracket shall provide adjustable mounting depths of 15" to 26" below the ceiling.

REFLECTOR Design 410 shall be available with the following reflector systems: 1) Type V, vertical lamp, one piece spun reflector, symmetrical distribution; 2) Type 3 horizontal lamp, one piece spun reflector, asymmetrical distribution; Each electro-brightened, anodized and sealed aluminum reflector shall hold a porcelain base lamp holder. The optical system shall be fully enclosed. All photometric data shall be certified by an independent testing facility.

BALLAST Ballast shall be readily accessible, removable and insulated. The fixture is to be factory pre-wired and electronically tested before shipment.

FINISH The standard exterior finish of the luminaire shall be Type 304-2B stainless steel.

Quality Lighting™



GARAGE & BUILDING MOUNTED

Quality Lighting™

Quality Lighting is a Philips group brand

2930 South Fairview Street
Santa Ana, CA 92704
Phone (714) 371-2394 • FAX (714) 668-1107
Toll Free Phone (800) 545-1326
e-mail: sales@qualitylighting.com • www.qualitylighting.com
Specifications subject to change without notice. ©2007 Quality Lighting

DESIGN-410-13



DISTRIBUTIONS

TYPE V Symmetrical (Vert. Lamp)
 TYPE 3 Asymmetrical (Horiz. Lamp)

ORDERING EXAMPLE 410-13-V-10.5-HPS-150-2B-120-EB

DESIGN	DISTRIBUTION	DEPTH	HPS	MH = Std. Metal Halide MHP = Pulse Start		LAMP
				MH/MHP		
410-13	V	10.5"	100/150	100/150/175/200*		ED-17
	3	10.5"	100/150	100/150/175/200*		ED-17
410-13	V	14.5"		250		ED-28
	3	14.5"		250		ED-28
410-13	V	20"		250		ED-28
	3	20"		250		ED-28

* Available only in Pulse Start 100,150, 200 MHP = Pulse Start

REQUIRED CHOICES

VOLTAGES

- 120
- 208
- 240
- 277
- 347
- 480

OPTIONAL CHOICES

ELECTRICAL OPTIONS

- FD Single Fusing 120V/277V
- FDD Double Fusing 480V
- FDFD Double Fusing 208V/240V
- FDC Single Fusing 347V
- EMQZ Emergency Quartz Restrike
- IRS Instant Restrike Starter (HPS to 150W - HPF only)
- PWL Pre-lamped (Labor only)
- RM UL Approved Recessed Mounting For 2' x 2' Lay-in, includes flanges. (UL Required Heat Sensor included)

OPTIONAL MOUNTINGS

- EB External Brackets Stainless Steel 3' long, 1/2" sealtite whip with one straight connector.
- TM-1 Trunnion Mount Stainless Steel 3' long, 1/2" sealtite whip with one straight connector.

FINISH

CC Custom

Supply Color Chip

HOUSING OPTIONS

- WL Wet Location

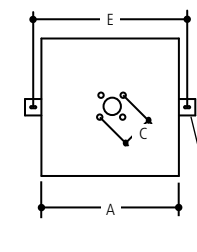
OPTICAL OPTIONS

- DL Prismatic Drop Lens

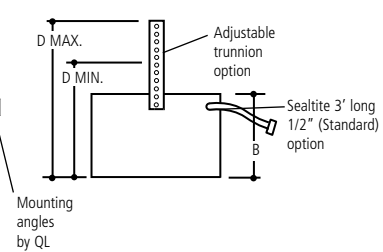
TAMPERPROOF OPTIONS

- TPS Tamperproof Screws
- T-410 Tamperproof tool (required) (For tamperproof screws)

EB Option



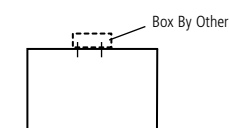
TM-1 Option



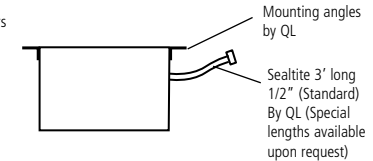
- DIMENSIONS**
- A 16.75" sq. (425.45 mm)
 - B See design depth
 - C 3.50" (88.90 mm)
 - D 15" Min. (381.00 mm)
 - D 26" Max (660.40 mm)
 - E 18.75" (476.13 mm)

WEIGHT
 36 lbs. (16.33 kgs)

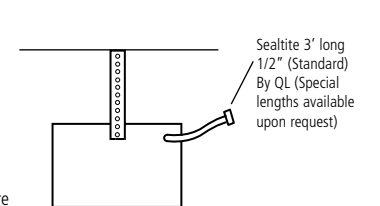
Standard Box Mount



EB Option



TM-1 Option



Notes:
 TM-1 trunnion & EB mounting angles are shipped separately.

TM-1 & EB options can also be furnished pre-lamped (add PWL to catalog number)