

Parking Areas
Building Entrances
Pedestrian Walkways
Shopping Malls
Large Areas



Specifications



EISA COMPLIANT

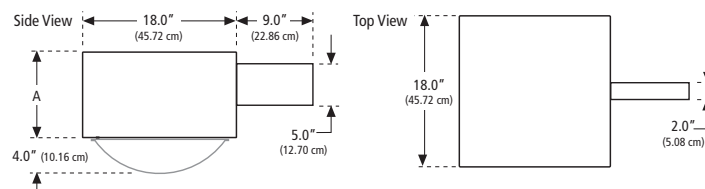
- HOUSING** CHX housing and top shall be formed aluminum sheet metal housing. The sides and top shall be mechanically and chemically sealed to ensure a rain-tight seal. The fixture shall be UL listed "suitable for wet locations". Standard unit constructed to IP54.
- LAMP ACCESS** Door frame shall be mitered anodized aluminum extrusion, gasketed to ensure a positive seal to the housing.
- LENS** The lens shall be tempered glass, thermal and shock resistant. (Flat glass or sag glass determined by wattage and optics specified.)
- INSTALLATION** CHX mounting shall be surface arm mount (field installed). Mounting arms shall be of heavy gauge extruded aluminum. Threaded tension rods shall be used to bolt to square (standard) or round poles. Optional post top mount shall allow fixture to be mounted to square or round poles or tenons. (See ordering information for additional mounting options.)
- REFLECTOR** Rotatable multi-faceted segmented reflectors. Optical assemblies shall be field rotatable at 90° increments and exchangeable. Vertically lamped, flat glass optics (2F, 3F, 4F, 5F) provide Full Cutoff distribution and precision uniformity. Horizontally lamped, flat glass optics (2H, 3H, 4H, 5H) provide Full Cutoff distribution. Vertically lamped, sag glass optics (2V, 3V, 4V, 5V) provide Cutoff distribution. Flat glass Full Cutoff optics are Dark Sky compliant.
- BALLAST** Ballast shall be high power factor with reliable starting at temperatures as low as -40°C (-40°F) for High Pressure Sodium, -34°C (-30°F) for Pulse Start Metal Halide, -29° (-20°F) for Metal Halide.
- FINISH** Polyester powder coat, electrostatically applied, which is preceded by a five step pre-treatment process including an iron phosphate priming stage for superior coating adhesion. This process meets or exceeds all ASTM testing requirements, including those for 1,000 - hour salt spray endurance testing.
- WARRANTY** Mechanical, finish and electrical shall be covered by a limited 1-year warranty. See terms and conditions for details.



Some luminaires use fluorescent or high intensity discharge (HID) lamps that contain small amounts of mercury. Such lamps are labeled 'Contain Mercury' and/or with the symbol 'Hg'. Lamps that contain mercury must be disposed of in accordance with local requirements. Information regarding lamp recycle and disposal can be found at www.lamprecycle.org.

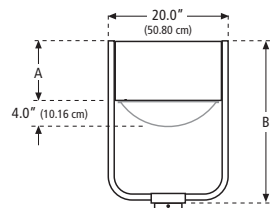
DIMENSIONS

Arm Mount



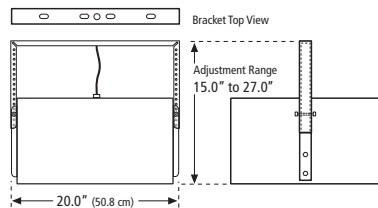
150-400 W	450-1000 W
A 10" 25.4 cm	12" 30.5 cm

Post Top Yoke Mount



150-400 W	450-1000 W
A 10" 25.4 cm	12" 30.5 cm
B 27.25" 69.22 cm	29.25" 74.3 cm

Trunnion Yoke Mount



EFFECTIVE PROJECTED AREA (EPA)

Arm Mount	10" flat glass	10" sag glass	12" flat glass	12" sag glass
	1 @ 90°	1.9	2.1	2.2
2 @ 90°	3.8	4.2	4.3	4.7
2 @ 180°	3.8	4.2	4.3	4.7
3 @ 90°	4.8	5.6	5.6	6.1
3 @ 120°	4.8	5.6	5.6	6.1
4 @ 90°	5.0	5.9	5.9	6.4

Post Top Mount	10" flat glass	10" sag glass	12" flat glass	12" sag glass
		2.2	2.4	2.5

Weight 30 lbs.

PROJECT
FIXTURE TYPE
CATALOG#

Quality Lighting
 1611 Clovis R. Barker Rd.
 San Marcos, Texas 78666
 Toll Free Phone (800) 545-1326 • FAX (866) 713-6002
 www.qualitylighting.com
 e-mail: Quality.Info@Philips.com



ORDERING EXAMPLE CHX18P-750-3V-277-SS-F1-DB

ORDERING INFORMATION

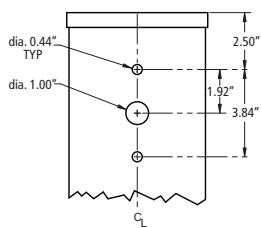
SERIES / SOURCE / WATTAGE	DISTRIBUTION	VOLTAGE	MOUNTING	OPTIONS	FINISH	ACCESSORIES
CHX18P-150 Pulse Start Metal Halide	2F ³ Verical Lamp, Flat Glass, Full Cutoff	120	SS	F1	DB	SK-CHX-(F)
CHX18P-175 ^{1,2}	3F ³	208	SR(X)	F2	BLK	
CHX18P-250	4F ³	240	DM	CSR	GR	
CHX18P-350	5F ³	277	SA2	PCB	SA	
CHX18P-400	2V Verical Lamp, Sag Glass, Cutoff	347	MA2	HSS-H-CHX	WHT	
CHX18P-450 ^{1,2}		480	RTA-(X)-(Y)	HSS-V-CHX	TBK	
CHX18P-750 ¹		4V	SPTA-(X)-2.375		TGN	
CHX18P-875 ¹		5V	WB		RAL(*)	
CHX18P-1000 ¹			WBA			
CHX18M-1000 ¹ Metal Halide	2H Horizontal Lamp, Flat Glass, Full Cutoff		PT(XY)			
CHX18S-150 High Pressure Sodium	3H		Y			
CHX18S-250	4H					
CHX18S-400	5H					
CHX18S-750						

SERIES / SOURCE / WATTAGE	DISTRIBUTION	VOLTAGE	MOUNTING	OPTIONS	FINISH
Pulse Start Metal Halide	Verical Lamp, Flat Glass	<input type="checkbox"/> 120	<input type="checkbox"/> SS Surface Arm Mount to Square Pole (standard)	<input type="checkbox"/> F1 Single Fusing, 120V/277V/347V	<input type="checkbox"/> DB Dark Bronze
<input type="checkbox"/> CHX18P-150	<input type="checkbox"/> 2F ³ Type II	<input type="checkbox"/> 208	<input type="checkbox"/> SR(X) Surface Arm Mount to Round Pole specify pole OD: 3.5/4 or 4/5.	<input type="checkbox"/> F2 Double Fusing, 208V/240V/480V	<input type="checkbox"/> BLK Black
<input type="checkbox"/> CHX18P-175 ^{1,2}	<input type="checkbox"/> 3F ³ Type III	<input type="checkbox"/> 240	<input type="checkbox"/> DM Direct Mount to Square Pole for 1@90 or 2@180 only.	<input type="checkbox"/> CSR Quartz Restricle	<input type="checkbox"/> GR Gray
<input type="checkbox"/> CHX18P-250	<input type="checkbox"/> 4F ³ Type IV	<input type="checkbox"/> 277	<input type="checkbox"/> SA2 Adjustable Arm Mount to Square Pole for 1@90 or 2@180 only.	<input type="checkbox"/> PCB Photo Control Button 120W-277W only	<input type="checkbox"/> SA Satin Aluminum
<input type="checkbox"/> CHX18P-350	<input type="checkbox"/> 5F ³ Type V	<input type="checkbox"/> 347	<input type="checkbox"/> MA2 Adjustable Mastfitter Mount to 2-3/8" OD tenon	<input type="checkbox"/> HSS-H-CHX Internal House Side Shield for Flat glass optics, Type II, III or V	<input type="checkbox"/> WHT White
<input type="checkbox"/> CHX18P-400	Verical Lamp, Sag Glass	<input type="checkbox"/> 480	<input type="checkbox"/> RTA-(X)-(Y) Round Pole Tenon Adapter Slipfitter for round pole w/ 2.375" x 4" tenon, 9" arm included specify configuration: 1@90, 2@90, 3@90, 4@90, 2@180, 2@120, 3@120. specify tenon size: 2.375" OD x 4" tall, 3/3.5" OD x 6" tall, 3.5/4" OD x 6" tall.	<input type="checkbox"/> HSS-V-CHX Internal House Side Shield for Sag glass optics, Type II, III or V	<input type="checkbox"/> TBK Textured Black
<input type="checkbox"/> CHX18P-450 ^{1,2}	<input type="checkbox"/> 2V Type II			Note: CHX Type IV optics include HSS.	<input type="checkbox"/> TGN Textured Green
<input type="checkbox"/> CHX18P-750 ¹	<input type="checkbox"/> 3V Type III				<input type="checkbox"/> RAL(*) Specify Custom RAL color number
<input type="checkbox"/> CHX18P-875 ¹	<input type="checkbox"/> 4V Type IV				
<input type="checkbox"/> CHX18P-1000 ¹	<input type="checkbox"/> 5V Type V				
Metal Halide	Horizontal Lamp, Flat Glass		<input type="checkbox"/> SPTA-(X)-2.375 Square Pole Tenon Adapter Slipfitter for square pole w/ 2.375" x 4" tenon, 9" arm included specify configuration: 1@90, 2@90, 3@90, 4@90, 2@180.		
<input type="checkbox"/> CHX18M-1000 ¹	<input type="checkbox"/> 2H Type II				
High Pressure Sodium	<input type="checkbox"/> 3H Type III		<input type="checkbox"/> WB Wall Mount Bracket		
<input type="checkbox"/> CHX18S-150	<input type="checkbox"/> 4H Type IV		<input type="checkbox"/> WBA Wall Mount Bracket with 9" arm		
<input type="checkbox"/> CHX18S-250	<input type="checkbox"/> 5H Type V		<input type="checkbox"/> PT(XY) Post Top Yoke Mount specify pole size and type: 4S, 5S, 2.375R, 3R, 4R.		
<input type="checkbox"/> CHX18S-400			<input type="checkbox"/> Y Trunnion Yoke Mount		
<input type="checkbox"/> CHX18S-750					

SOURCE	WATTAGE	LAMP ENVELOPE
PS	150W-400W	BT / ED28
	450W-1000W	BT / ED37
HPS	250W-400W, 750W	E18
	150W	E23 1/2
M	1000W	BT/ED37

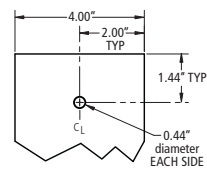
DRILL TEMPLATES

Drill Template # 8 (NTS)



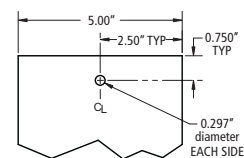
DM Direct Mount to Square pole
SS Arm Mount to Square Pole
SR Arm Mount to Round Pole
SA2 Adjustable Arm Mount to Square Pole
4"-6" Square Pole or 3.5"-5" Round Pole

Drill Template # 9 (NTS)



PT Post Top Mount to 4" Square Pole

Drill Template # 10 (NTS)



PT Post Top Mount to 5" Square Pole

NOTES:
 1) 2H optic not available
 2) Vertical Burn Lamp only
 3) F optics require reduced envelope BT/ED28 lamp. Current max wattage: 400W

ACCESSORIES

SK-CHX-(F) External Glare Shield (specify finish)

