

SPECIFICATIONS

Quality Lighting™

HOUSING One piece highly tooled formed aluminum, with integral reinforcements and concealed fasteners and welds. The fixtures are C-UL & UL listed "suitable for wet locations."

LENS AND LENS FRAME Clear, heat and impact resistant tempered glass lens, secured in an extruded aluminum door frame. 21" & 27" fixtures with VS, V and VR distribution use square convex lens (unless noted otherwise), all others use square flat lens. Note: Drop acrylic lens (DA) is standard on 21" vertically lamped units.

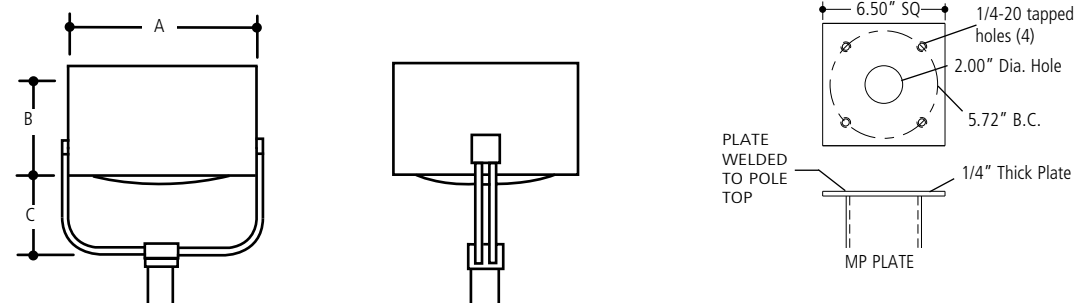
GASKETING The lens is fully gasketed to the lens frame with closed cell neoprene. The lens door frame is gasketed to the housing with a dense silicone extruded gasket featuring twin flexible extensions to provide a double seal.

INSTALLATION Design SLY is provided with 1/2" aluminum 6061 T6 Schedule 40 pipe yoke, cast aluminum side caps and pole-top fitter, and matching pole-top plate. Plates are welded to pole top in place of tenon (See detail below). Tenon adapter brackets (TPH) are available for mounting to poles with existing tenons.

REFLECTOR Reflector systems can be easily rotated in 90° increments or interchanged without the use of tools. Design SLY is available with the following reflector systems: 1) Type S (16" & 21") — square distribution; 2) Type VS — square distribution; 3) Type VR (27") — rectangular distribution; 4) Type I (16" & 21") — asymmetrical distribution; 5) Type III — asymmetrical distribution; 6) Type F — forward throw distribution; 7) Type 2 — asymmetrical distribution; 8) Type V — symmetrical distribution.

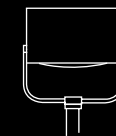
BALLAST All CWA ballasts (+10% to -10% lamp power regulation) shall be tray mounted and supplied with quick-disconnects. Ballasts are rated for -20° F operation. All non CWA ballast shall be HPF.

FINISH Polyester powder coat, electrostatically applied, which is preceded by a five step pre-treatment process including an iron phosphate priming stage for superior coating adhesion. This process meets or exceeds all ASTM testing requirements, including those for 1,000 - hour salt spray endurance testing.



DIMENSIONS			EFFECTIVE PROJECTED AREA (EPA)			WEIGHT		
	16"	21"	16"	21"	27"	16"	21"	27"
A	16.00" sq. (406.4 mm)	21.00" sq. (533.4 mm)	27.00" sq. (685.8mm)	1.40 sq. ft. (.13M2)	2.00 sq. ft. (.19M2)	3.00 sq. ft. (.28M2)		
B	9.50" (241.3 mm)	11.00" (279.4 mm)	15.00" (381.0 mm)					
C	7.00" (177.8 mm)	11.00" (279.4 mm)	13.00" (330.2 mm)	45 lbs. (20.45 kgs)	54 lbs. (24.54 kgs)	77 lbs. (35 kgs)		

MP PLATE NOTES
Provide plate as shown above or purchase plate from QL.
On existing poles with 2" tenon - use TPH adapter.



AREA & ROADWAY

Quality Lighting™

Quality Lighting is a Philips group brand

2930 South Fairview Street
Santa Ana, CA 92704
Phone (714) 371-2394 • FAX (714) 668-1107
Toll Free Phone (800) 545-1326
e-mail: sales@qualitylighting.com • www.qualitylighting.com
Specifications subject to change without notice. ©2007 Quality Lighting

DESIGN-SLY-16/21/27



DISTRIBUTIONS

TYPE S	Square (Horiz. Lamp)	TYPE 3	Asymmetrical (Horiz. Lamp)
TYPE VS	Square (Vertical Lamp)	TYPE F	Forward Throw (Horiz. Lamp)
TYPE VR	Rectangular (Vert. Lamp)	TYPE V2	Asymmetrical (Vertical Lamp)
TYPE 1	Asymmetrical (Horiz. Lamp)	TYPE V	Symmetrical (Vert. Lamp)

ORDERING EXAMPLE SLY-21-VS-HPS-400-CL-DB-120-MP-FD-HSS

DESIGN	DISTRIBUTION	HPS	MH = Std. Metal Halide	CL = Convex glass lens	LENS
			MHP = Pulse Start	FL = Flat glass lens	
SLY-16	S	70/100/150	70/100/150/175/200*	ED-17	FL
	1	70/100/150	70/100/150/175/200*	ED-17	FL
	3	70/100/150	70/100/150/175/200*	ED-17	FL
	F	70/100/150	70/100/150/175/200*	ED-17	FL
	VS	70/100/150	70/100/150/175/200*	ED-17	FL
SLY-21	VS	250/400		ED-18	CL or FL
	VS		250/400/450*	BT-28/BT-37	CL
	VS		400 Flat Lens	BT-28	FL
	V2	250/400		ED-18	CL or FL
	V2		250/400/450*	BT-28/BT-37	CL
	S	250/400		ED-18	FL
	S		250/400	BT-28/BT-37	FL
	1	250/400		ED-18	FL
	1		250/400	BT-28/BT-37	FL
	3	250/400		ED-18	FL
	3		250/400	BT-28/BT-37	FL
F	250/400		ED-18	FL	
F		250/400	BT-28/BT-37	FL	
SLY-27	V or VS	400		ED-18	CL or FL
	V or VS		400/450*	BT-37	CL or FL
	V or VS	750		BT-37	CL or FL
	V or VS		1000	BT-56	CL
	V or VS		1000 Flat Lens	BT-37	FL
	V or VS	1000 Flat Lens		BT-37	FL
	V or VS	1000		E-25	CL
	VR		1000	BT-56	CL
	VR		1000 Flat Lens	BT-37	FL
	VR	1000		E-25	CL
	F	1000		E-25	FL
F		1000	BT-56	FL	

* Available only in Pulse Start 70, 100, 150, 200, 450 MHP = Pulse Start

REQUIRED CHOICES

FINISH

BK Black	WH White	GR Green	FG Gray	DB Bronze	SL Silver	CC Custom
						

VOLTAGES **MOUNTINGS**

120	TPH	Tenon Adapter
208		(Slipfits 2-3/8" to 2-7/8" Pipe Tenon)
240	MP	Mounting Plate (Weld to pole) See detail
277		
347		
480		

OPTIONAL CHOICES

ELECTRICAL OPTIONS		OPTICAL OPTIONS		LIGHT TRESPASS OPTIONS	
FD	Single Fusing 120V/277V	LX	Vandal Resistant Lens (SLY-21 & SLY-16 only)	CL80x360	Internal 80° Vert. x 360° Horiz. Lens Shielding
FDD	Double Fusing 480V			CL60x135	Internal 60° Vert. x 135° Horiz. Lens Shielding
FDFD	Double Fusing 208V/240V	CL	Convex glass for SLY-21 only (standard - acrylic)	HSS	House Side Shield (75° standard) (external)
FDC	Single Fusing 347V			FL	Flat clear glass lens (see ordering information for availability)
PCT	Photo Cell and Receptacle				



TPH
Tenon Adapter



CL80 Shielding Internal
80° Vert. x 360° Horiz.
Lens Shielding



CL60x135 Internal
60° Vert. x 135° Horiz.
Lens Shielding