

SPECIFICATIONS

Quality Lighting™

HOUSING Each Paradigm PDM-24 fixture shall be one-piece die cast aluminum, with a single concealed die-cast aluminum tool-less latch integrated into the face of the housing. The housing shall have a three-sided top acrylic window to provide an optional edge-glo® in various colors. The edge-glo® option shall not have light above 90 degrees. The acrylic window shall be injection molded with down-light prisms. If no edge-glo® option is ordered, a clear frosted lens will be furnished with no visible edge-glo® light. The fixture shall be C-UL and UL listed "suitable for wet locations".

OPTICAL CHAMBER The optical chamber shall consist of a segmented reflector with a highly specular processed surface and a socket assembly. Reflector sidewalls and top shall be contoured so that no light is reflected back into the lamp arc tube, for optimum lamp life and performance. All Metal Halide and High Pressure Sodium lamps shall be provided with the appropriate 4KV or 5KV pulse rated socket. The reflectors shall produce the following distributions: Type II, III, F, S, VS.

LENS FRAME ASSEMBLY The lens frame assembly shall be one-piece die-cast aluminum, which shall hinge at the pole end, with two concealed stainless steel hinges. The door frame shall have a heat and impact resistant clear tempered glass lens enclosed with high temperature silicone gasket.

EDGE-GLO® OPTION The Edge-Glo® shall consist of a one-piece injection molded acrylic lens with down-light prisms. The lens shall provide an Edge-Glo® on three sides of the luminaire, the Edge-Glo® option shall not have light above 90 degrees. The acrylic window shall be injection molded with down-light prisms. The Edge-Glo® option is available in optional transparent colors. If no Edge-Glo® option is ordered, a clear frosted lens will be furnished with no visible Edge-Glo® light.

ELECTRICAL COMPONENTS Electrical components shall be UL and C-UL recognized and be an integral part of the fixture. Ballasts and related components shall be integrated onto a single mounting plate as a self-contained subassembly. The fixture, ballast assembly shall attach to fixture using quick-disconnecting key slots with tool-less hinges and latches. Fast field wiring shall be provided for by pre-wiring all electrical component with quick-disconnect plugs. All ballasts shall be the component type, capable of providing lamp starting down to -20°F, with power factor of 90% or better (High Power Factor).

FIXTURE ARM The fixture arm shall be a one-piece die-cast aluminum with internal centering guides. Luminaire-to-pole assembly shall be made through a mechanical draw bolt attachment inside the arm, eliminating all exposed fasteners and welds. Arm assembly shall include a pole reinforcing plate which will mount inside the pole for added strength at the arm joint.

FINISH Polyester powder coat, electro statically applied, which is preceded by a five step pre-treatment process including an iron phosphate priming stage for superior coating adhesion. This process meets or exceeds all ASTM testing requirements, including those for 1,000-hour salt spray endurance testing

DIMENSIONS

A	18.50" (470 mm)
B	23.62" (600 mm)
C	8.75" (222.25 mm)
D	3.50" (88.90)

EFFECTIVE PROJECTED
AREA (EPA)
1.0 sq.ft. (.096M2)

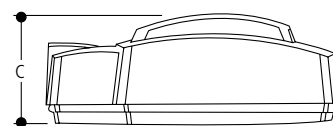
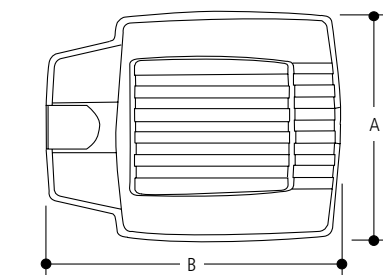
WEIGHT

35.5 lbs. (16.13kgs)

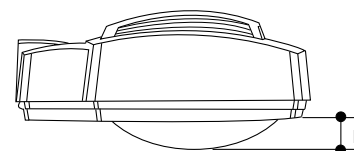
Quality Lighting™

Quality Lighting is a Philips group brand

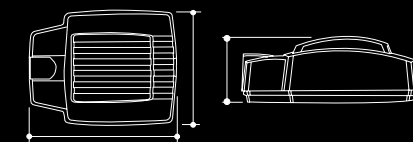
2930 South Fairview Street
Santa Ana, CA 92704
Phone (714) 371-2394 • FAX (714) 668-1107
Toll Free Phone (800) 545-1326
e-mail: sales@qualitylighting.com • www.qualitylighting.com
Specifications subject to change without notice. ©2007 Quality Lighting



FL Flat Lens



CL Contoured Lens (VS Optics Only)



AREA & ROADWAY

PARADIGM™ - PDM-24



CLEAR FROSTED
UN-LIGHTED

OPAQUE
UN-LIGHTED
(OPAQUE COLOR WINDOW
MATCHES EXTERIOR FIXTURE)

EDGE-GLO®
ILLUMINATED WITH
VARIOUS COLORS



STANDARD



OPTIONAL



OPTIONAL

Latch in housing provides tool-less entry for easy installation and maintenance



DISTRIBUTIONS

Type 2	Asymmetrical (Horiz. Lamp)	Type 3	Asymmetrical (Horiz. Lamp)
Type VS	Square (Vertical Lamp)	Type S	Square (Horiz. Lamp)
Type F	Forward Throw (Horiz. Lamp)		

MH = Std. Metal Halide
MHP = Pulse Start

DESIGN	REFLECTOR	HPS	MH/MHP	LAMP	LENS
PDM-24	VS	250/400	250	ED-18	CL
			400	ED-28	CL
PDM-24	S	250/400	250	ED-18	FL
			400	ED-28	FL
			400	ED-37	FL
PDM-24	2	250/400	250	ED-18	FL
			400	ED-28	FL
			400	ED-37	FL
PDM-24	3	250/400	250	ED-18	FL
			400	ED-28	FL
			400	ED-37	FL
PDM-24	F	250/400	250	ED-18	FL
			400	ED-28	FL
			400	ED-37	FL

MHP = Pulse Start
400W MH VS - Must Use ED-28 400W - Reduced Envelope Lamp (400W Only)

REQUIRED CHOICES

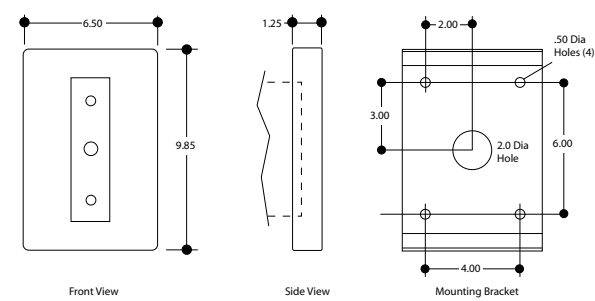
VOLTAGES	MOUNTINGS	NON-TRANSLUCENT (UN-LIGHTED)	TRANSLUCENT (LIGHTED) EDGE-GLO® OPTIONS
120	LA Long Arm (5.0")	ESTD Clear Frosted Window (No Visible Light) - Standard EMFC Match Exterior Fixture Color Opaque Window ECC Custom Color Opaque Window Additional colors available upon request.	EGFL Frosted Translucent (Lighted) EGCC Custom Color Translucent (Lighted) (see choices above)
208	SA Standard Arm (1.50")		
240	CWB Cast Wall Bracket		
277	ESF External Slip Fitter		
347	(for 2-3/8" O.D. Pipe)		
480			

FINISH

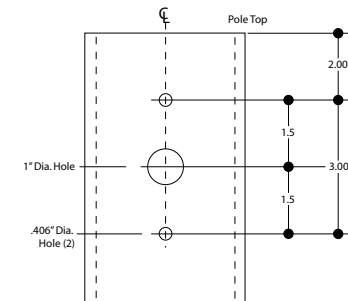


OPTIONAL CHOICES

ELECTRICAL OPTIONS	OPTICAL OPTIONS	LIGHT TRESPASS OPTIONS
FD Single Fusing 120V/277V	LX Lexan Lens	CL80x360 Internal 80 Vert. x 360 Horiz Lens Shielding (VS Dist. Only)
FDD Double Fusing 480V		
FDFD Double Fusing 208V/240V		CL60x135 Internal 60 Vert. x 135 Horiz Lens Shielding (VS Dist. Only)
FDC Single Fusing 347V		
PCT Photo Cell and Receptacle		



CWB (Cast Aluminum Wall Bracket)



Pole Drilling for Round or Square Holes

TRANSLUCENT (LIGHTED)

EDGE-GLO® OPTIONS

PANTONE #	DESCRIPTION
409C	Shadow Grey
4625C	Dark Brown
188C	Burgundy
187C	Red
123C	Sunflower Yellow
349C	Green
322C	Teal Green
299C	Process Blue
2945C	Bright Blue
281C	European Blue