

Parking Areas
Building Entrances
Pedestrian Walkways
Shopping Malls
Large Areas



Specifications



- HOUSING** The one piece reinforced housing is constructed of heavy gauge spun aluminum. The fixture is C-UL & UL listed "suitable for wet locations".
- LENS FRAME** The heavy-duty cast aluminum lens frame shall be hinged to the housing with twin stainless steel hinges.
- LENS** The flat or convex thermal and shock resistant glass lens is sealed to the lens frame and secured with retainer clips.
- LENS AND GASKETING** The lens is gasketed to the lens frame with extruded butyl acrylic tape sealant. The lens frame is gasketed to the housing's internal reinforcing ring with silicone-impregnated Dacron gasketing.
- INSTALLATION** Design 134 fixtures are supplied with a yoke assembly allowing the fixture to be tilted 45° to permit easy access to the reflector compartment for re-lamping, or to the ballast compartment for service. Tenon adapter brackets (TPH) are available for mounting to poles with existing tenons.
- REFLECTOR** Design 134 shall be available with the following reflector systems: 1) Type VR - rectangular distribution; 2) Type F - forward throw distribution; 3) Type V - symmetrical distribution; 4) Type 3 - asymmetrical distribution; 5) Type VS - square vertical lamp. All photometric data shall be certified by an independent testing facility.
- BALLAST** All ballasts are CWA or HXHPF type with power factor of 90% and are tray mounted and supplied with quick disconnects. Ballasts are rated for 20°F or 40°F operation.
- FINISH** Polyester powder coat, electrostatically applied, which is preceded by a five step pre-treatment process including an iron phosphate priming stage for superior coating adhesion. This process meets or exceeds all ASTM testing requirements, including those for 1,000 - hour salt spray endurance testing.

PROJECT
FIXTURE TYPE
CATALOG#

Quality Lighting
 2930 South Fairview Street
 Santa Ana, CA 92704
 Phone (714) 371-2394 • FAX (714) 668-1107 • Toll Free Phone (800) 545-1326
 e-mail: sales@qualitylighting.com • www.qualitylighting.com
 Specifications subject to change without notice. ©2007 Quality Lighting

DISTRIBUTIONS

- TYPE VR Rectangular Symmetrical (Vert. Lamp)
- TYPE VS Square (Vert. Lamp)
- TYPE V Symmetrical (Vert. Lamp)
- TYPE 3 Asymmetrical (Horiz. Lamp)
- TYPE F Forward Throw (Horiz. Lamp)

ORDERING EXAMPLE 134-25-VR-HPS-400-CL-DB-120-MP-FD-CL80x360

DESIGN	DISTRIBUTION	HPS	MH = Std. Metal Halide	CL = Convex glass lens	LAMP	LENS
			MHP = Pulse Start	FL = Flat glass lens		
134-20	3	70/100/150	100/150/175/200*	ED-17	FL	
	F	70/100/150	100/150/175/200*	ED-17	FL	
	V	70/100/150	100/150/175/200*	ED-17	FL	
134-25	VR	250/400		ED-18	CL or FL	
	VR		250/400	ED-28	CL or FL	
	VR		400/450*	ED-37	CL	
	VR	750		BT-37	CL	
134-25	VS	250/400		ED-18	CL or FL	
	VS		250/400	ED-28	CL or FL	
	VS		400/450*	ED-37	CL	
	VS	750		BT-37	CL	
134-25	3	250/400		ED-18	FL	
	3		250	ED-28	FL	
	3		400	ED-37	FL	
	3	750		BT-37	FL	
134-25	F	250/400		ED-18	FL	
	F		250	ED-28	FL	
	F		400	ED-37	FL	
	F	750		BT-37	FL	

* Available only in Pulse Start 100, 150, 200, 450 MHP = Pulse Start

REQUIRED CHOICES

FINISH

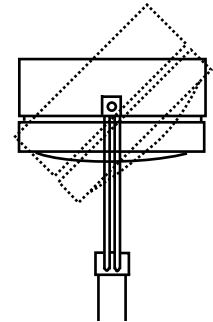
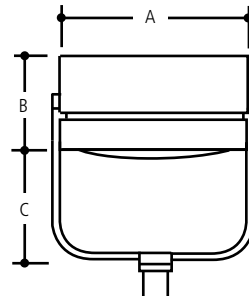
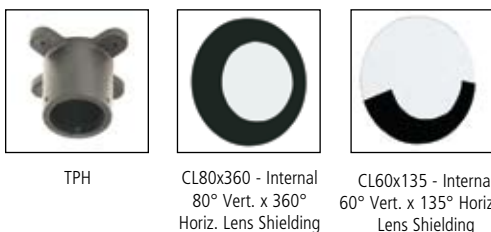


VOLTAGES MOUNTINGS

120	TPH	Tenon Adapter plate (Slipfits 2-3/8" to 2-7/8" Pipe Tenon)
208		
240	MP	Mounting Plate
277		(Weld to pole) See detail.
347		
480		

OPTIONAL CHOICES

ELECTRICAL OPTIONS		OPTICAL OPTIONS		LIGHT TRESPASS OPTIONS	
FD	Single Fusing 120V/277V	LX	Vandal Resistant Lens (Lexan lens 400 W max)	CL80x360	Internal 80° Vert. x 360° Horiz. Lens Shielding
FDD	Double Fusing 480V			CL60x135	Internal 60° Vert. x 135° Horiz. Lens Shielding
FDFD	Double Fusing 208V/240V			HSS	House Side Shield (75° Standard) (External)
FDC	Single Fusing 347V			FL	Flat clear glass lens (see ordering information for availability)
PCT	Photo Cell and Receptacle				



DIMENSIONS

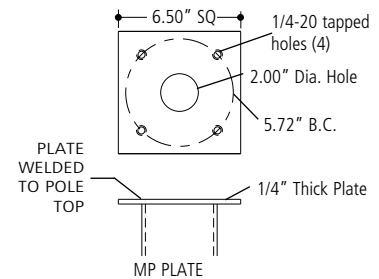
	20"	25"
A	20.00" dia. (508 mm)	25.00" dia. (635 mm)
B	10.50" (266.7 mm)	11.00" (279.4 mm)
C	12.75" (323.8 mm)	14.50" (368 mm)

EFFECTIVE PROJECTED AREA (EPA)

20"	25"
1.40 sq. ft. (.13M2)	2.0 sq. ft. (.18M2)

WEIGHT

20"	25"
34 lbs. (15.4 kgs)	59 lbs. (26.7 kgs)



MP PLATE NOTES
 Provide plate as shown above or purchase plate from QL.
 On existing poles with 2" tenon - use TPH adapter.