

Parking Areas
Building Entrances
Pedestrian Walkways
Shopping Malls
Large Areas



Specifications



- HOUSING** Each domed top, reinforced housing shall be constructed of heavy gage spun aluminum. The fixture is C-UL & UL listed "suitable for wet locations".
- LENS FRAME** The heavy-duty cast aluminum lens frame shall be hinged to the housing with twin stainless steel hinges.
- LENS** The flat or convex thermal and shock resistant glass lens is sealed to the lens frame and secured with retainer clips.
- LENS AND GASKETING** The lens is gasketed to the lens frame with extruded butyl acrylic tape sealant. The lens frame is gasketed to the housing's internal reinforcing ring with silicone-impregnated Dacron gasketing.
- INSTALLATION** Design 129 shall be provided with a cast aluminum 2.5" long arm for mounting a single fixture or twin fixtures at 180°. A 13.5" long extruded aluminum arm is supplied for other mounting configurations.
- REFLECTOR** Design 129 shall be available with the following reflector systems: 1) Type VS (29" only) - square distribution, vertical lamp, 16-panel reflector; 2) Type VR (25" & 29" only) - rectangular distribution, vertical lamp, 6 or 10-panel reflector; 3) Type 3 - asymmetrical distribution; 4) Type V (20" only) - symmetrical distribution, vertical lamp; 5) Type F- Forward Throw.
- BALLAST** All ballasts are CWA or HX-HPF type with power factor of 90% and are easily removed and supplied with quick disconnects. Ballasts are rated for -20°F. or -40°F. operation.
- FINISH** Polyester powder coat, electrostatically applied, which is preceded by a five step pre-treatment process including an iron phosphate priming stage for superior coating adhesion. This process meets or exceeds all ASTM testing requirements, including those for 1,000 - hour salt spray endurance testing.

PROJECT
FIXTURE TYPE
CATALOG#

Quality Lighting
 2930 South Fairview Street
 Santa Ana, CA 92704
 Phone (714) 371-2394 • FAX (714) 668-1107 • Toll Free Phone (800) 545-1326
 e-mail: sales@qualitylighting.com • www.qualitylighting.com
 Specifications subject to change without notice. ©2007 Quality Lighting

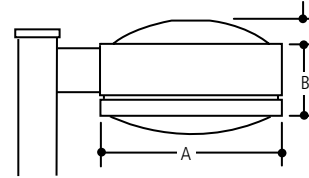
DISTRIBUTIONS

TYPE VS Square (Vert. Lamp)	TYPE 3 Asymmetrical (Horiz. Lamp)
TYPE VR Rectangular (Vert. Lamp)	TYPE V Symmetrical (Vert. Lamp)
	TYPE F Forward Throw (Horiz. Lamp)

ORDERING EXAMPLE 129-25-VR-HPS-400-CL-DB-120-LA-FD-CL80x360

DESIGN	DISTRIBUTION	HPS	H/MHP	LAMP	LENS
129-20	3	70/100/150	70/100/150/175/200*	ED-17	FL
	V	70/100/150	70/100/150/175/200*	ED-17	FL
	F	70/100/150	70/100/150/175/200*	ED-17	FL
129-25	VR/VS	250/400		ED-18	CL or FL
	VR/VS		250/400	ED-28	CL or FL
	VR/VS		400/450*	ED-37	CL or FL
	VR/VS	750		BT-37	CL or FL
	3/F	250/400		ED-18	CL or FL
	3/F		250/400	ED-28/37	CL or FL
129-29	VR/VS	400		ED-18	CL or FL
	VR/VS	750		BT-37	CL or FL
	VR/VS	1000		E-25	CL or FL
	VR/VS	1000 Flat Lens		ED-37	CL or FL
	VR/VS		400	ED-37	CL or FL
	VR/VS		1000	BT-56	CL or FL
129-29	3/F	400		ED-18	CL or FL
	3/F	750		BT-37	CL or FL
	3/F	1000		E-25	CL or FL
	3/F		400	ED-37	CL or FL
	3/F		1000	BT-56	CL or FL

* Available only in Pulse Start 100,150,200,450 MHP = Pulse Start



EFFECTIVE PROJECTED AREA (EPA)

	20"	25"	29"
1 Fixture	1.60 sq. ft. (.15M2)	2.20 sq. ft. (.21M2)	2.86 sq. ft. (.27M2)
2 Fixture	3.20sq. ft. (.30M2)	4.40 sq. ft. (.42M2)	6.14 sq. ft. (.59M2)
3 Fixture	4.25 sq. ft. (.41M2)	5.10 sq. ft. (.49M2)	7.06 sq. ft. (.68M2)
4 Fixture	4.80 sq. ft. (.462)	7.00 sq. ft. (.67M2)	9.82 sq. ft. (.94M2)

WEIGHT

	20"	25"	29"
38 lbs. (17.24 kgs)	61 lbs. (27.67 kgs)	81 lbs. (36.75 kgs)	

DIMENSIONS

	20"	25"	29"
A	20.00" dia. (508 mm)	25.00" dia. (635 mm)	29.00" dia. (736.6 mm)
B	10.75" (273 mm)	10.00" (254 mm)	10.00" (254 mm)
C	3.25" (82 mm)	3.50" (89 mm)	4.70" (119 mm)

REQUIRED CHOICES

FINISH



VOLTAGES MOUNTINGS

120	SA	Standard Arm (2.5")
208	LA	Long Arm (13.5")
240	CWB	Cast Wall Bracket
277	ESF	External Slip Fitter
347		(for 2-3/8" O.D. Pipe)
480		

OPTIONAL CHOICES

ELECTRICAL OPTIONS

FD	Single Fusing 120V/277V
FDD	Double Fusing 480V
FDDF	Double Fusing 208V/240V
FDC	Single Fusing 347V
PCT	Photo Cell and Receptacle

OPTICAL OPTIONS

LX	Vandal Resistant Shield (20" & 25" only, 400 Max)
----	--

LIGHT TRESPASS OPTIONS

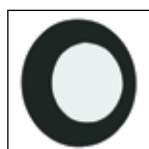
CL80x360	Internal 80° Vert. x 360° Horiz. Lens Shielding
CL60x135	Internal 60° Vert. x 135° Horiz. -Lens Shielding
HSS	House Side Shield (75° Standard) (External)
FL	Flat clear glass lens (see ordering information for availability)



CWB



ESF



CL80x360 - Internal 80° Vert. x 360° Horiz. Lens Shielding



CL60x135 - Internal 60° Vert. x 135° Horiz. Lens Shielding