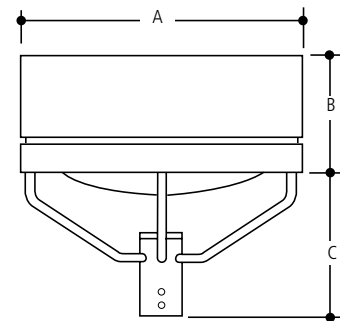


## SPECIFICATIONS

HOUSING	Each Design 124 one-piece, reinforced housing shall be constructed of heavy-gauge spun aluminum. There shall be no seams, weld beads or other visible disturbances to the housing's smooth surface. All internal and external threaded hardware shall be stainless steel. The fixture shall be UL listed "suitable for wet locations".
LENS FRAME	The heavy-duty cast aluminum lens frame shall be hinged to the housing with twin stainless steel piano hinges and secured with flush mounted, vibration resistant, captive screw type fasteners. The housing and lens frame assembly shall be equipped with a positive locking support providing "tilt away housing" access to the optical and ballast compartments for servicing.
LENS	The flat or convex thermal and shock resistant glass lens shall be sealed to the lens frame and secured with retainer clips.
DUAL GASKETING	The flat or convex glass lens shall be gasketed to the lens frame with extruded butyl acrylic tape sealant. The lens frame shall be gasketed to the housing's internal reinforcement ring with silicone impregnated Dacron gasketing.
INSTALLATION	Each Design 124's lens frame assembly shall be welded to an extruded aluminum spider-type mounting assembly and a cast aluminum slipfitter. The assembly shall slipfit a 2.375" O.D. x 4.5" tenon. The prewired mounting assembly's cast aluminum post-top fitter shall have a removable top cap allowing the installer to complete power supply wiring after the luminaire has been set atop its pole.
REFLECTOR	Design 124 shall be available with the following reflector systems: 1) Type VR - rectangular distribution; 2) Type F - forward throw distribution; 3) Type V - symmetrical distribution; 4) Type 3 - asymmetrical distribution; 5) Type VS - square vertical lamp. All photometric data shall be certified by an independent testing facility
BALLAST	All CWA ballasts (+10% to -10% lamp power regulation) shall be tray mounted and supplied with quick-disconnects. Ballasts are rated for -20° F operation. All non CWA ballast shall be HPF.
FINISH	Polyester powder coat, electrostatically applied, which is preceded by a five step pre-treatment process including an iron phosphate priming stage for superior coating adhesion. This process meets or exceeds all ASTM testing requirements, including those for 1,000 - hour salt spray endurance testing.



DIMENSIONS		
Size	20"	25"
A	20.00" (508.00 mm)	25.00" (635.00 mm)
B	10.50" (266.00 mm)	11.00" (279.40 mm)
C	10.50" (266.00 mm)	11.00" (279.40 mm)

EFFECTIVE PROJECTED AREA (EPA)		
Size	20"	25"
1 Fixture	1.40 sq. ft. (.13M2)	2.0 sq. ft. (.19M2)

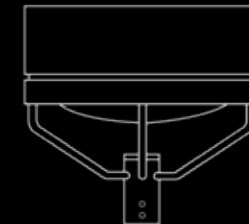
WEIGHT	
20"	34 lbs. (15.45 kgs)
25"	59 lbs. (28.76 kgs)

*Quality Lighting™*

Quality Lighting is a Philips group brand

2930 South Fairview Street  
 Santa Ana, CA 92704  
 Phone (714) 371-2394 • FAX (714) 668-1107  
 Toll Free Phone (800) 545-1326  
 e-mail: sales@qualitylighting.com • www.qualitylighting.com  
 Specifications subject to change without notice. ©2007 Quality Lighting

*Quality Lighting™*



AREA & ROADWAY

DESIGN-124/20/25



**DISTRIBUTIONS**

- TYPE VR Rectangular Symmetrical (Vert. Lamp)
- TYPE F Forward Throw (Horiz. Lamp)
- TYPE V Symmetrical (Vert. Lamp)
- TYPE VS Square (Vertical Lamp)
- TYPE 3 Asymmetrical (Horiz. Lamp)

**ORDERING EXAMPLE** 124-25-VR-HPS-400-CL-DB-120-LA-FD-CL80x360

DESIGN	DISTRIBUTION	HPS	MH = Std. Metal Halide MHP = Pulse Start		LAMP	LENS
			MH/MHP			
124-20	3	70/100/150	100/150/175/200*		ED-17	FL
	F	70/100/150	100/150/175/200*		ED-17	FL
	V	70/100/150	100/150/175/200*		ED-17	FL
124-25	VR	250/400			ED-18	CL or FL
	VR		250/400		ED-28	CL or FL
	VR		400/450*		ED-37	CL
	VR	750			BT-37	CL
124-25	VS	250/400			ED-18	CL or FL
	VS		250/400		ED-28	CL or FL
	VS		400/450*		ED-37	CL
	VS	750			BT-37	CL
124-25	3	250/400			ED-18	FL
	3		250		ED-28	FL
	3		400		ED-37	FL
	3	750			BT-37	FL
124-25	F	250/400			ED-18	FL
	F		250		ED-28	FL
	F		400		ED-37	FL
	F	750			BT-37	FL

\* Available only in Pulse Start 100,150,200,450 MHP = Pulse Start

**REQUIRED CHOICES**

FINISH



VOLTAGES

- 120
- 208
- 240
- 277
- 347
- 480

**OPTIONAL CHOICES**

ELECTRICAL OPTIONS

- FD Single Fusing 120V/277V
- FDD Double Fusing 480V
- FDFD Double Fusing 208V/240V
- FDC Single Fusing 347V
- PCT Photo Cell and Receptacle

OPTICAL OPTIONS

- LX Vandal Resistant Shield (Lexan lens 400W max.)

LIGHT TRESPASS OPTIONS

- CL80x360 Internal 80° Vert. x 360° Horiz. Lens Shielding
- CL60x135 Internal 60° Vert. x 135° Horiz. Lens Shielding
- HSS House Side Shield (75° Standard) (External)
- FL Flat clear glass lens (see ordering information for availability)



CL80x360 - Internal 80° Vert. x 360° Horiz. Lens Shielding



CL60x135 - Internal 60° Vert. x 135° Horiz. Lens Shielding