

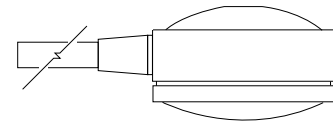
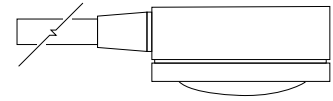
INSTALLATION SHEET

Safety Warnings

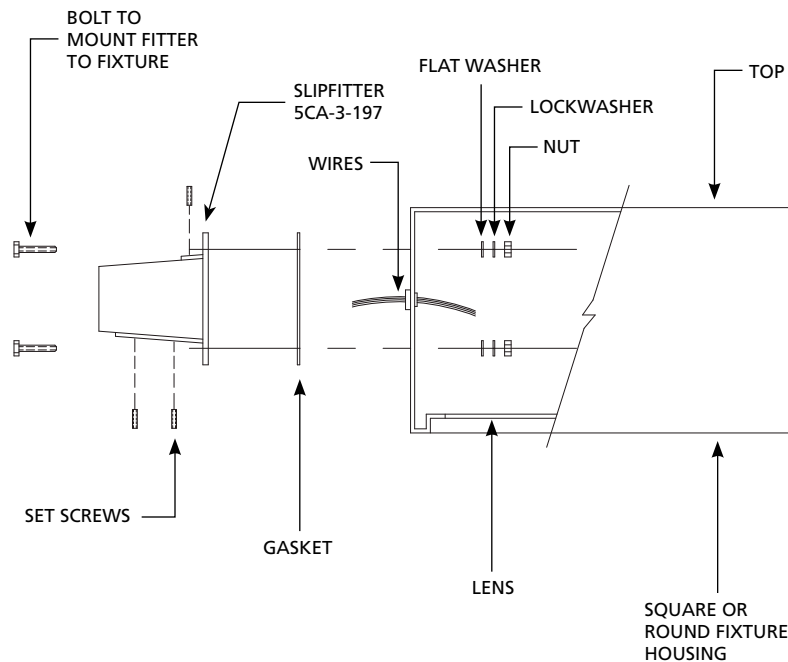
1. All electrical power must be disconnected before any work is performed.
2. All installation and wiring must meet local, state and national electrical codes.
3. Proper grounding is required to insure personal safety.
4. Due to potentially high temperatures on the lens - avoid mounting locations where contact to bare skin is possible.
5. Keep all gaskets and sealing surfaces clean during installation.
6. Install proper lamp type and wattage.

Note:

These instructions are for general conditions and are not intended to cover all situations.



EXTERNAL SLIPFITTER INSTALLATION



1. Add three set screws to slipfitter as shown. Do not insert fully until mounted on pipe arm.

2. Pull excess fixture wires out of fitter and through pipe arm for connections at other end of pipe mounting.

3. Install fitter onto 2" schedule 40 pipe arm as far as possible. Position fixture with an upward tilt and level from side to side.

4. Tighten set screws while leveling fixture only enough so they make contact with the pipe and hold fixture in proper position.

5. Give each set screw an additional 1/2 turn to fully tighten in order as follows: **DO NOT OVERTIGHTEN!** A: Tighten bottom set screw farthest from fixture housing. B: tighten top set screw. C: tighten bottom setscrew nearest housing.

6. Connect wires black to black, white to white and green to ground.

7. Install proper type and wattage of lamp.

Note: Cast slipfitter is designed to fit 2-3/8" O.D. pipe.

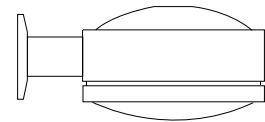
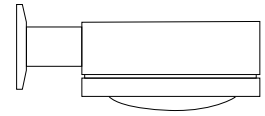
INSTALLATION SHEET

Safety Warnings

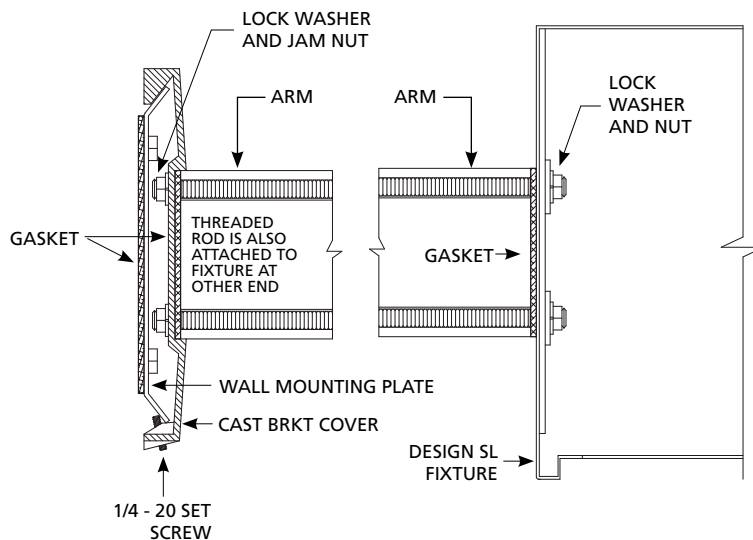
1. All electrical power must be disconnected before any work is performed.
2. All installation and wiring must meet local, state and national electrical codes.
3. Proper grounding is required to insure personal safety.
4. Due to potentially high temperatures on the lens - avoid mounting locations where contact to bare skin is possible.
5. Keep all gaskets and sealing surfaces clean during installation.
6. Install proper lamp type and wattage.

Note:

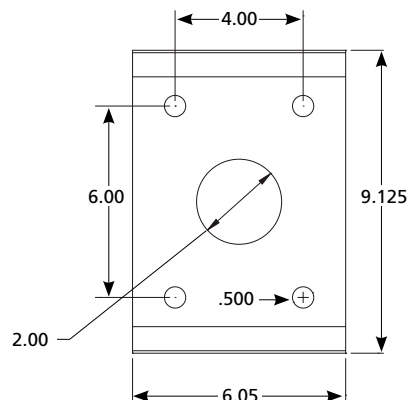
These instructions are for general conditions and are not intended to cover all situations.



CAST WALL BRACKET INSTALLATION



1. Secure mounting plate to wall (plate must be flat and level).
2. Make sure gaskets are placed on fixture and cast bracket cover.
3. Attach threaded rod to cast bracket cover by using lock washers and jam nuts.
4. Slide arm over threaded rods.
5. Feed fixture wires through arm and cast bracket cover. Insert threaded rods into fixture housing and attach using washers, lock washers and nuts. Tighten securely.
6. After making all electrical connections hook cast bracket cover over wall mounting plate and secure bracket cover using 1/4-20 set screws.



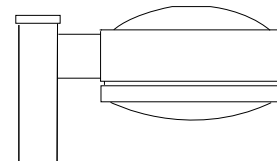
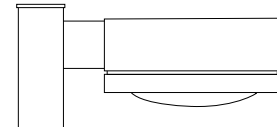
INSTALLATION SHEET

Safety Warnings

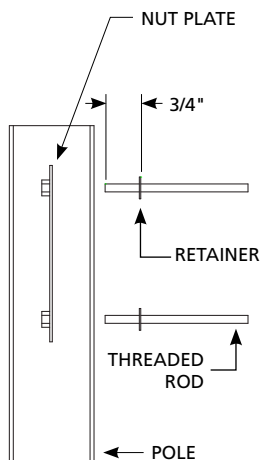
1. All electrical power must be disconnected before any work is performed.
2. All installation and wiring must meet local, state and national electrical codes.
3. Proper grounding is required to insure personal safety.
4. Due to potentially high temperatures on the lens - avoid mounting locations where contact to bare skin is possible.
5. Keep all gaskets and sealing surfaces clean during installation.
6. Install proper lamp type and wattage.

Note:

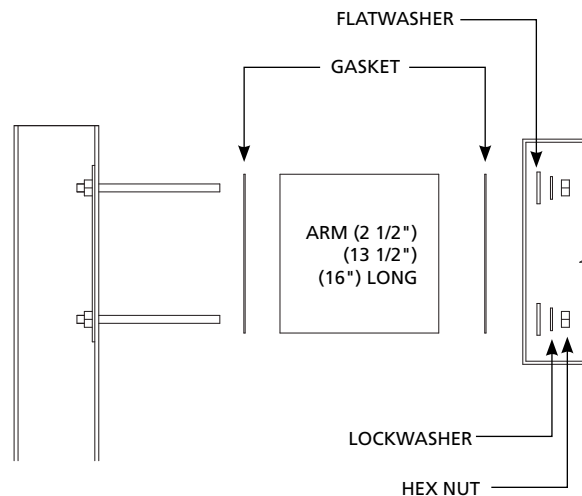
These instructions are for general conditions and are not intended to cover all situations.



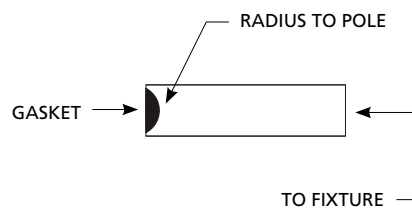
ARM MOUNT INSTALLATION



DETAIL 1



DETAIL 2



DETAIL 3

1. Add retainers to both rods. Position retainer about $\frac{3}{4}$ " from the end of each threaded rod (Detail 1).

2. Insert the end of one rod into the bottom mounting hole of pole. While holding the nut plate in position inside the pole, thread the rod into the nut plate until the retainer is snug against the pole. Thread top rod into nut plate equally.

3. Slide arm over rods (radius against pole Detail 3).

4. Feed the electrical wires of the fixture through the arm and out the top of the pole.

5. Position fixture over rods. Secure fixture to arm assembly with flat washers, lock washers and hex nuts. (See Detail 2).

Important: The rods must be properly pre-tensioned. Torque nuts to 10Ft-lbs. Then turn the nuts an additional $\frac{1}{8}$ turn for the 2-1/2" arm, $\frac{1}{2}$ turn for the 13-1/2" arm and $\frac{3}{4}$ turn for the 16" arm.

6. Connect wires black to black, white to white and green to ground.

7. Install proper type and wattage of lamp.

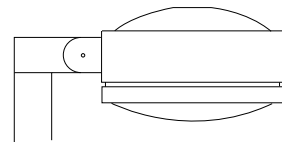
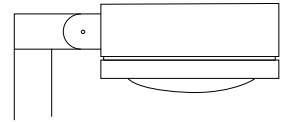
INSTALLATION SHEET

Safety Warnings

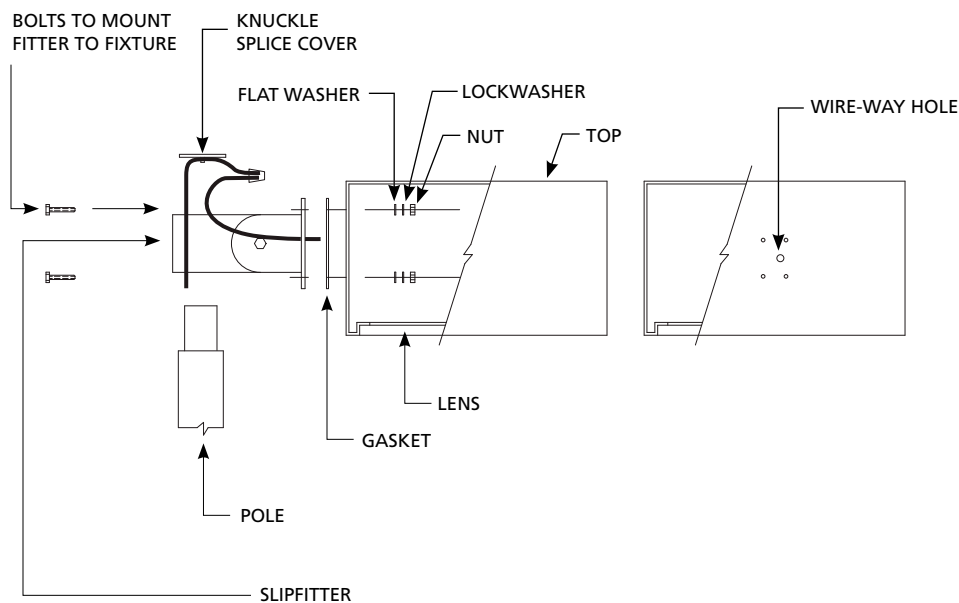
1. All electrical power must be disconnected before any work is performed.
2. All installation and wiring must meet local, state and national electrical codes.
3. Proper grounding is required to insure personal safety.
4. Due to potentially high temperatures on the lens - avoid mounting locations where contact to bare skin is possible.
5. Keep all gaskets and sealing surfaces clean during installation.
6. Install proper lamp type and wattage.

Note:

These instructions are for general conditions and are not intended to cover all situations.



KNUCKLE MOUNT INSTALLATION



1. Remove knuckle splice cover, pull fixture wires through splice opening.
2. Pull supply wires through knuckle slipfitter and out splice opening.
3. Install knuckle slipfitter onto pipe tenon and align into desired horizontal orientation. Tighten set screws securely.
4. Loosen knuckle pivot bolt, adjust vertical orientation and tighten pivot bolt securely.
5. Feed supply wires through wire tie on the bottom of the splice cover connect wires black to black, white to white and green to ground.
6. Close splice compartment using screws provided.
7. Install proper type and wattage of lamp.

Note: Cast knuckle slipfitter is designed to fit 2-3/8" O.D. pipe.